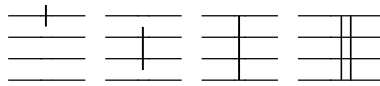




Flatted Neumes: Lowers the note by a half step  
 Always occurs on the “B” note, making a “Ti” into a “Te”  
 Resembles a lowercased “b”

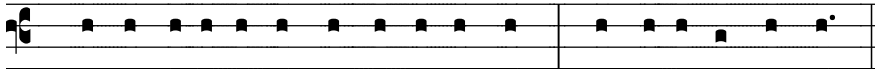


- Quarter Bar or “Grave”: Breathe if Necessary (often a Comma in the Text)
- Half Bar: Short Breath (often at the “Flex” or a semi-colon in the text)
- Full Bar: Choral Breath (often at the half verse, indicated by “\*” in the text)
  - Double Bar: Choral Breath (often at the ending of a verse)

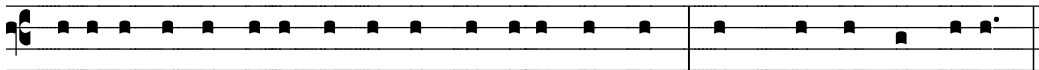


## Reading Chant

### Notation with Text



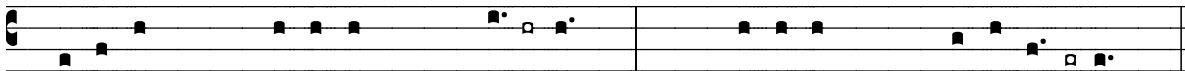
☩ Glo-ry be to the Fa-ther and to the Son, and to the Ho-ly Ghost:



☩ *As it was in the beginning is now and ever shall be, world without end. Amen*

### Musical Elements of Psalm Tones

Intonation      Recitation      Mediation      Recitation      Ending



- Intonation: Sung only on first verse, except Gospel Canticles
- Recitation: The main note that is sung (used in both halves of the verse)

- Mediation (or Mediant): The middle cadence at the half verse
- Ending: Final cadence at the end of the verse

## Textual Elements in the St. Dunstan's Psalter

2 To thee all Angels cry aloud, † the Heavens and all the · Pow'rs therein; \* To thee Cherubim and Seraphim contin·u-al-ly do cry,

6 The Father of an infinite Majesty, † thine adorable true and only · Son; \* Also the Holy · Ghost the Comforter.

- Dot ( · ) separates recitation from cadences
- Asterisk ( \* ) to separate half verses
- Flex (quarter verse)
  - Only in text, not music
  - Obelisk/Dagger ( † ) – Indicates the Breath/Break
  - Caron/Wedge ( ˇ ) – Drop from the recitation tone
  - Macron/Bar ( ¯ ) – Remain on recitation tone
- Text drives the singing
- Endings at the Mediation are based on the accented syllables
- How to Flex is based on accented syllables

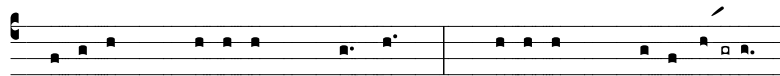
## Basic Psalm Tones By Type

### Do-Re-Mi Intonations

Tone I

(2)

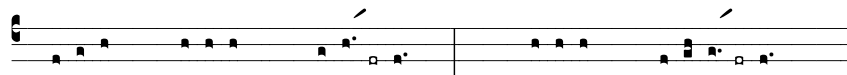
(4-5)



Tone VI

(2-4)

(4-5)

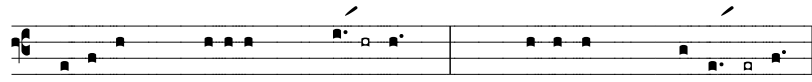


## Sol-La-(Ti)-Do Intonations

Tone II

(1-3)

(3-4)



Tone III

(4-6)

(4-5)



Tone VIII

(1-3)

(4-5)

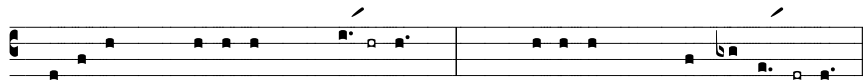


## Do-Mi-Sol Intonation

Tone V

(1-3)

(4-5)

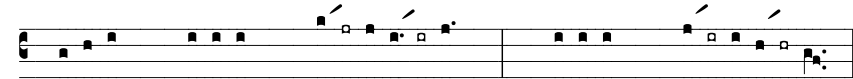


## (Do)-Ti-Do-Re Intonation

Tone VII

(4-6)

(4-6)



## (Do)-Re-Do-Re Intonation

Tone IV

(3-5)

(2-3)



## Peregrinas

Tonus Peregrinus

(4-5)

(3-4)

